

FRIENDS OF TULOUP @ QINGXING LOU 庆兴楼

TRANSPORTATION + SITE GUIDE



LOCATION

Qingxing Lou, Tianzhong Village, Shuyang Township, Nanjing County, Fujian, China.

中国, 福建省, 南靖县, 书洋镇, 田中村, 庆兴楼.

- 1 Tulou Museum (土楼博物馆)
- 2 small road leading to the tulou (vehicle accessible); enter at the "Xiang Yun" Restaurant
- 3 Qingxing Lou

[Google Map Link](#)

The nearest town/bus station is in Shuyang Township 书洋镇, about a 5-minute drive past our tulou (coming from the Xiamen-side). Off the main highway 562 coming from Xiamen (~130 km) or Zhangzhou, look out for the signs for the "Tulou Museum" and "Birthplace of Lu Xiulian." 100m after these signs, stop on the LEFT SIDE of the road at the small cluster of restaurants/rest stops; this is Tianzhong Village. The entrance to the small road leading to our tulou (Qingxing Lou) is to the left of the Xiang Yun Fan Dian 祥云饭店.

Walk or drive down the small road and you will see our tulou at the end. It's the big round one -- you can't miss it. If you need help, call Dana at 18516194385.

NOTE: transportation schedules change frequently! this information is for reference only; it is best to call ahead of time to confirm schedules

FROM XIAMEN

1. "TULOUP LINE" BUS FROM XIAMEN TO SHUYANG

Busses depart Xiamen Hubin South Coach Station (湖滨南长途汽车站) at 1:30pm daily and should arrive Shuyang (书洋镇) around 3:30pm. It is a private bus company and not listed on the general Chinese bus websites.

CALL TO CONFIRM/RESERVE: 0592-8600860

WEB: <http://item.taobao.com/item.htm?spm=a1z10.1.w4004-2640062813.19.fCn908&id=205463882>

COST: ~ 30-50 rmb

NOTE: If possible, ask the driver to stop at Tianzhong Village (田中村) before you get to Shuyang (it's on the way).

If you do go all the way to Shuyang, you can hitch a ride to Tianzhong (actual taxis are rare, but you can ask around for a ride/driver -- should be ~15RMB); it should be a 5-minute car ride.

2. PUBLIC BUS FROM XIAMEN TO NANJING COUNTY + CAB/RIDESHARE TO SHUYANG/TIANZHONG

Two busses depart daily from Xiamen:

From Xiamen Hubin Coach Station 湖滨长途汽车站 @ 17:30

From Xiamen Xinglin (Kyorin) Bus Station 厦门杏林汽车站 @ 10:00

WEB: <http://www.keyunzhan.com/piaojia-%E5%8E%A6%E9%97%A8-%E5%8D%97%E9%9D%96>

COST: ~28 RMB + car from Nanjing to Tianzhong Village

NOTE: From Nanjing County to Shuyang is ~1.5 hours by car or van. 135 9969 2869

3. HIRE PRIVATE CAR/VAN FROM XIAMEN

You can hire a van from Xiamen to take you directly to the tulou. It may cost ~500-600 RMB, depending on the company.

FRIENDS OF TULOUB @ QINGXING LOU 庆兴楼

TRANSPORTATION + SITE GUIDE

FROM SHENZHEN/HK

1. TRAIN FROM SHENZHEN TO YONGDING COUNTY + BUS OR CAR SHUYANG/TIANZHONG

There are two trains available : Daytime (7:30am) and Nighttime (9:23pm). From there, you can take a bus (1.5 hrs) to Shuyang; the last ride is around 4pm. You can also hire a car from Yongding to the Tulou for about 300 RMB.

DAY TRAIN: K198/199 / departs Shenzhen West Rail Station (深圳西) @ 7:40am / arrives Yongding (永定) @ 3:42pm.

NIGHT TRAIN: K636/637 / departs Shenzhen Luohu Station (at 9:23pm / arrives Yongding (永定) @ 4:48am (next day).

BUS FROM YONGDING TO SHUYANG: departs from Yongding Station ~5:50am (XM0550) and 6:30am (ZZ0630), ~25RMB/person, 1.5 hours.

Ask to stop at Tianzhong Village (田中村) before the bus arrives at Shuyang (书洋镇). Call 13159235263

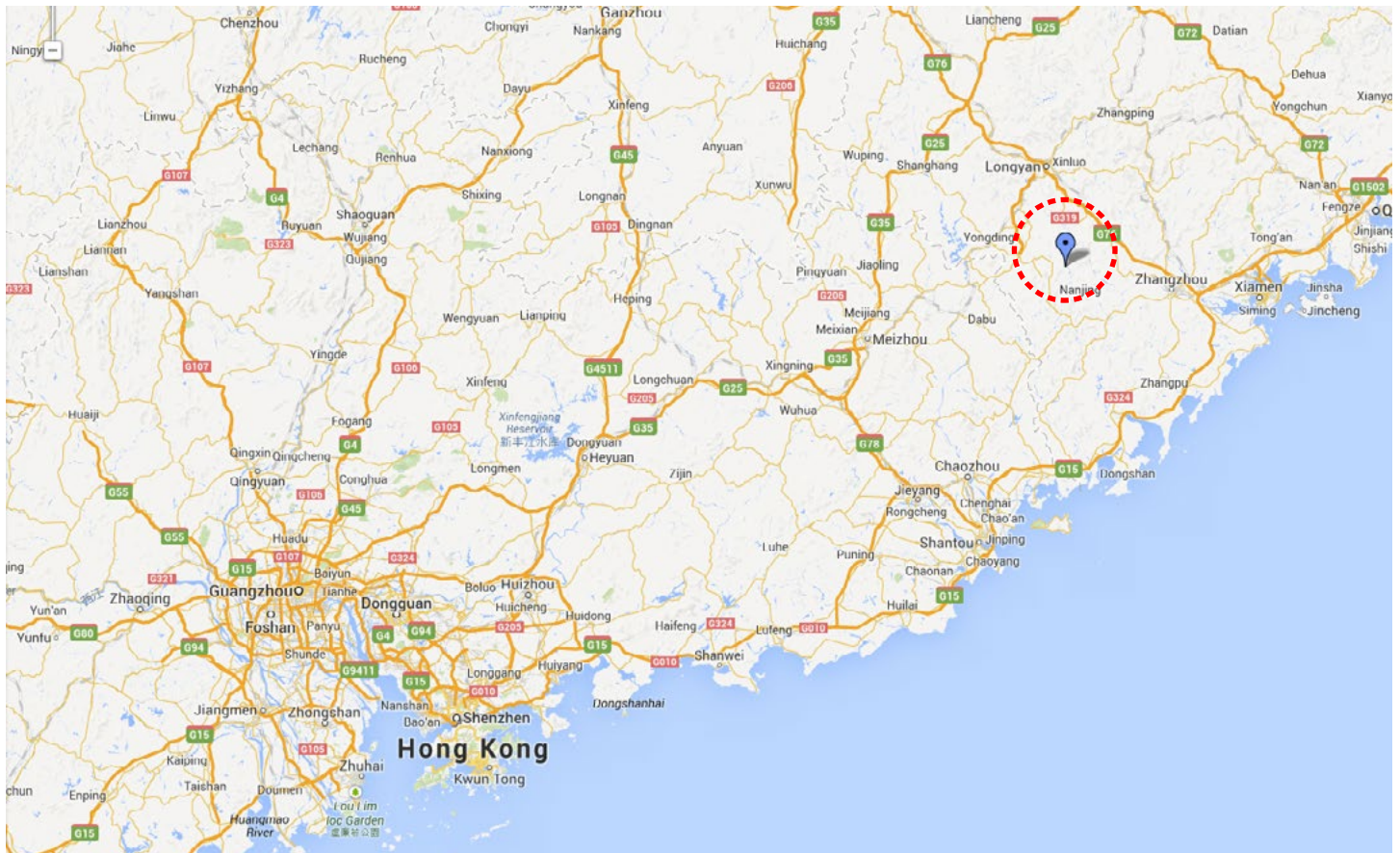
COST: 96-150 RMB, depending on seat/sleeper/etc + ~30RMB bus

WEB: DAY TRAIN: <http://www.huoche.biz/dck198-K199.aspx>

NIGHT TRAIN: <http://www.huoche.biz/q.aspx>

YONGDING-SHUYANG BUS: http://www.checi.cn/car/39880_s/

CONTEXT MAP

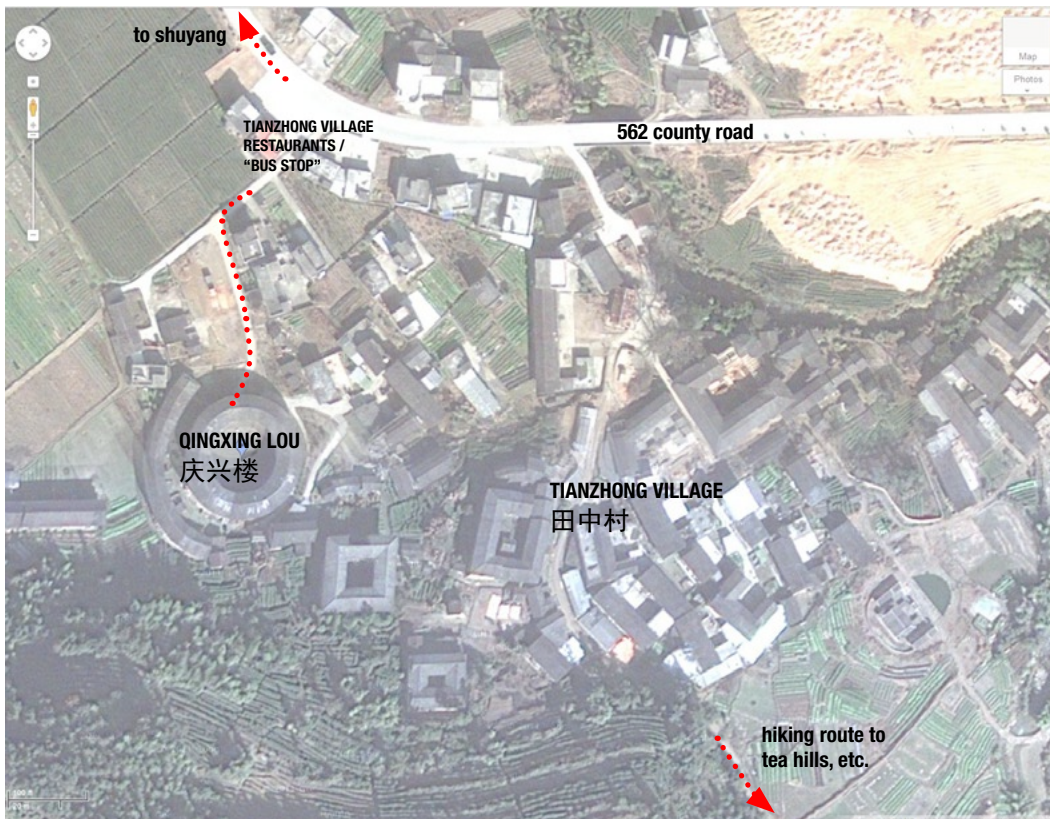


FRIENDS OF TULOUP @ QINGXING LOU 庆兴楼 TRANSPORTATION + SITE GUIDE

SITE MAP



TIANZHONG VILLAGE MAP



FRIENDS OF TULOOU @ QINGXING LOU 庆兴楼

TRANSPORTATION + SITE GUIDE

SHUYANG TOWNSHIP MAP



SCHEMATIC TOURIST MAP



QIANG YUN RESTAURANT (highlighted in yellow) is @ entrance to Qingxing Lou

FRIENDS OF TULOUB @ QINGXING LOU 庆兴楼

TRANSPORTATION + SITE GUIDE

TOURIST MAP

Fujian Nanjing Tulou Tourist Rout Map (each rout takes about 4 hours from the visitor center)

Rout A: 田螺坑 Tianlukeng, 裕昌楼 (东倒西歪楼) Yuchanglou/Tulou with slanting posts, 塔下村Taxia villege (pass+bus price: 100 rmb)

Rout B: 和贵楼 Heguilou, 怀远楼 Huaiyuanlou, 云水谣古道 Yunshuiyao stone path, 残墙断壁 ruins of Tulou (pass+bus price: 90 rmb)

